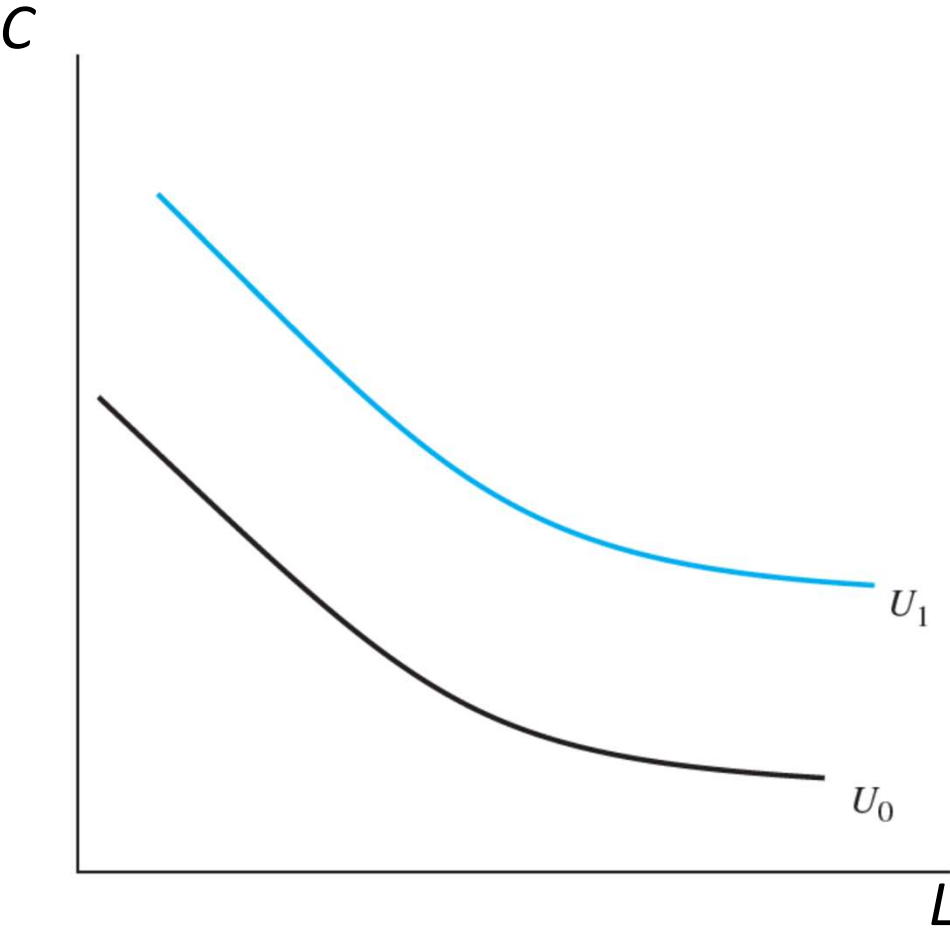
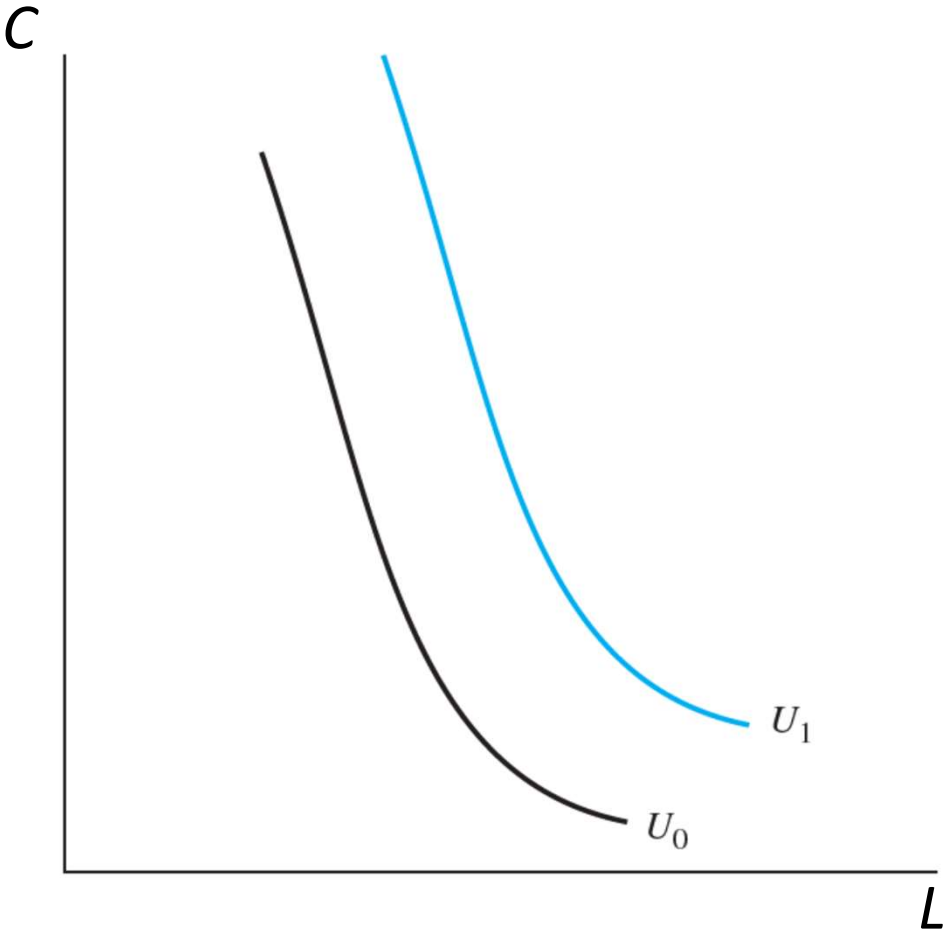


Fig 1: différentes preferences pour loisir



*Fig 2: solution interieur*

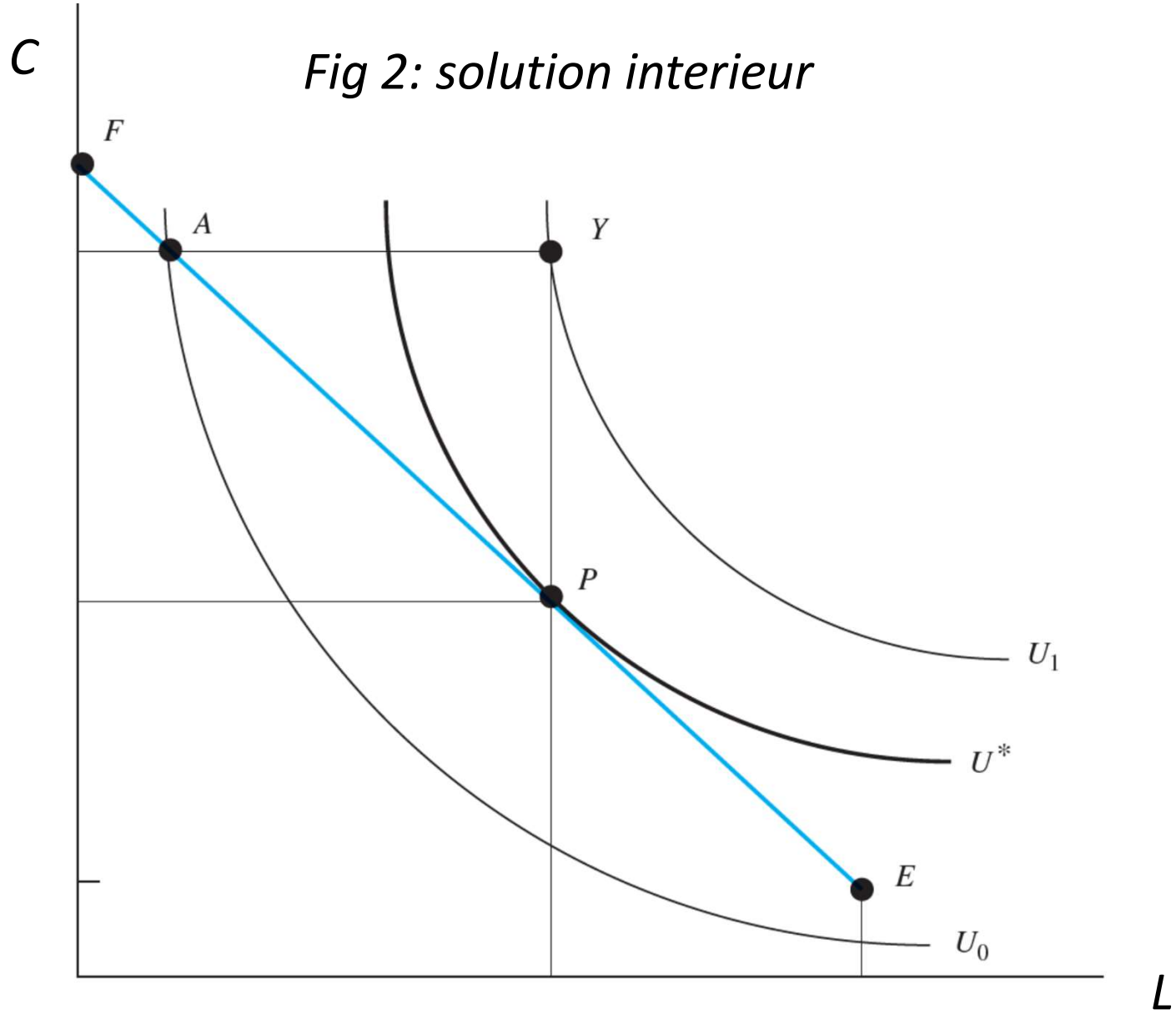
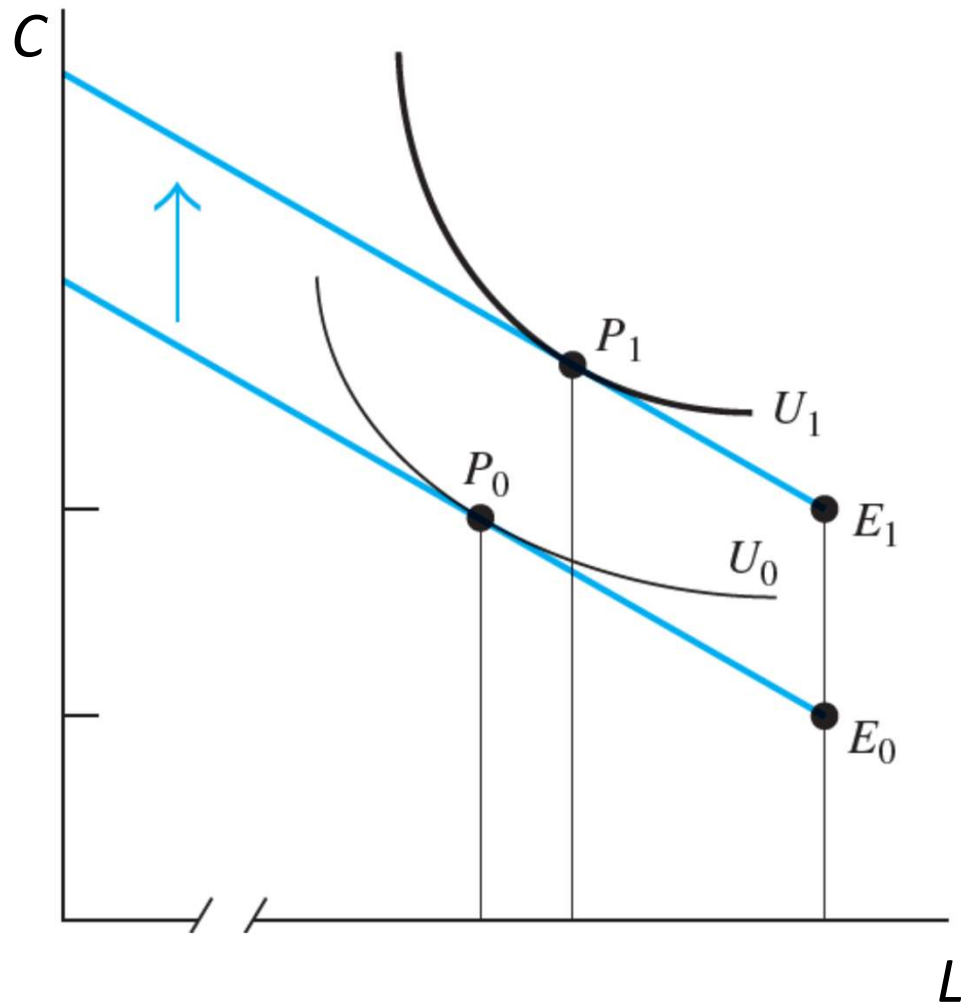


Fig 3: L'effet d'augmentation de la revenue non-salarial

Le loisir est un bien normal



Le loisir est un bien inférieur

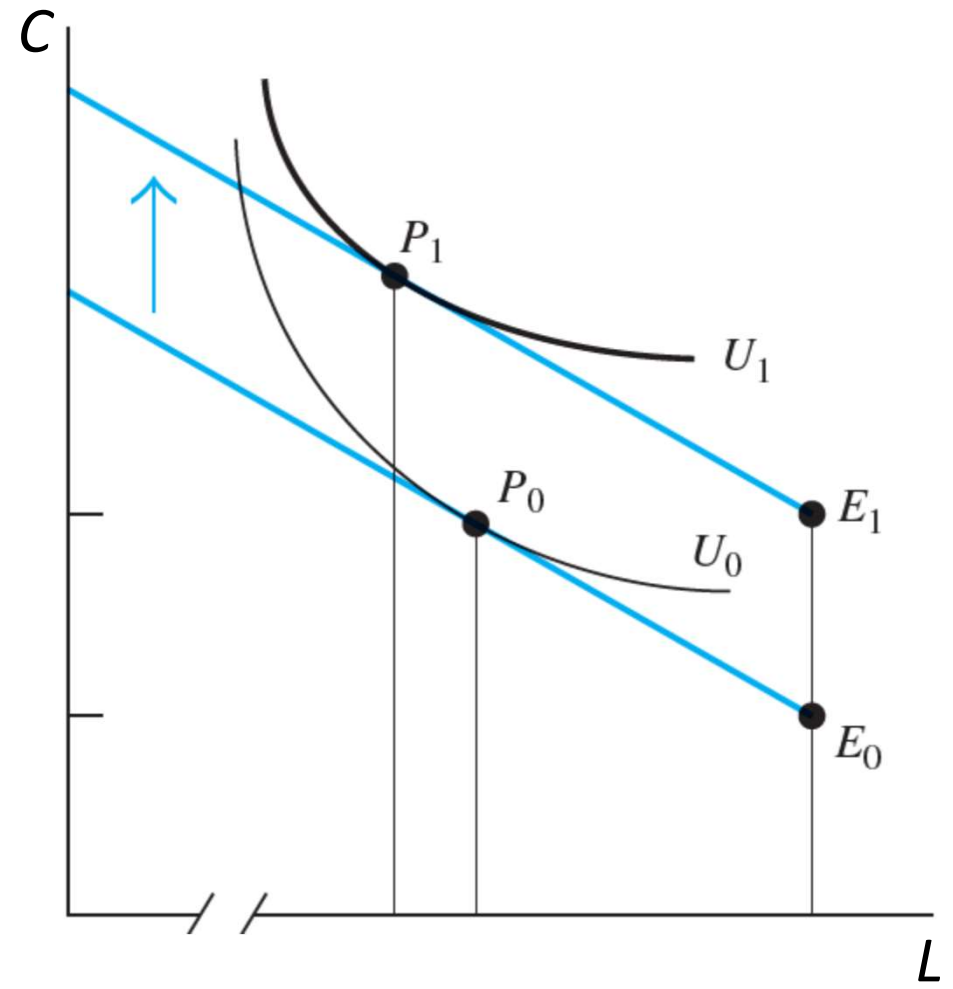
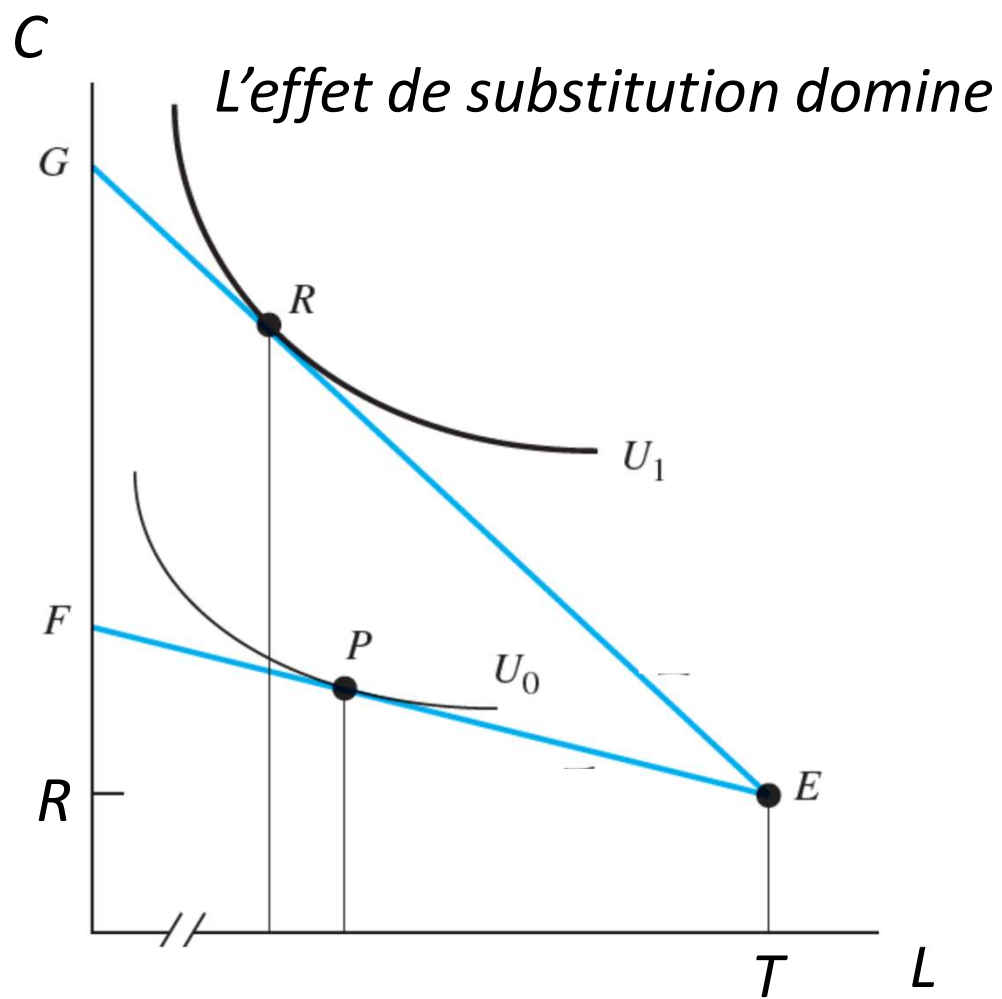
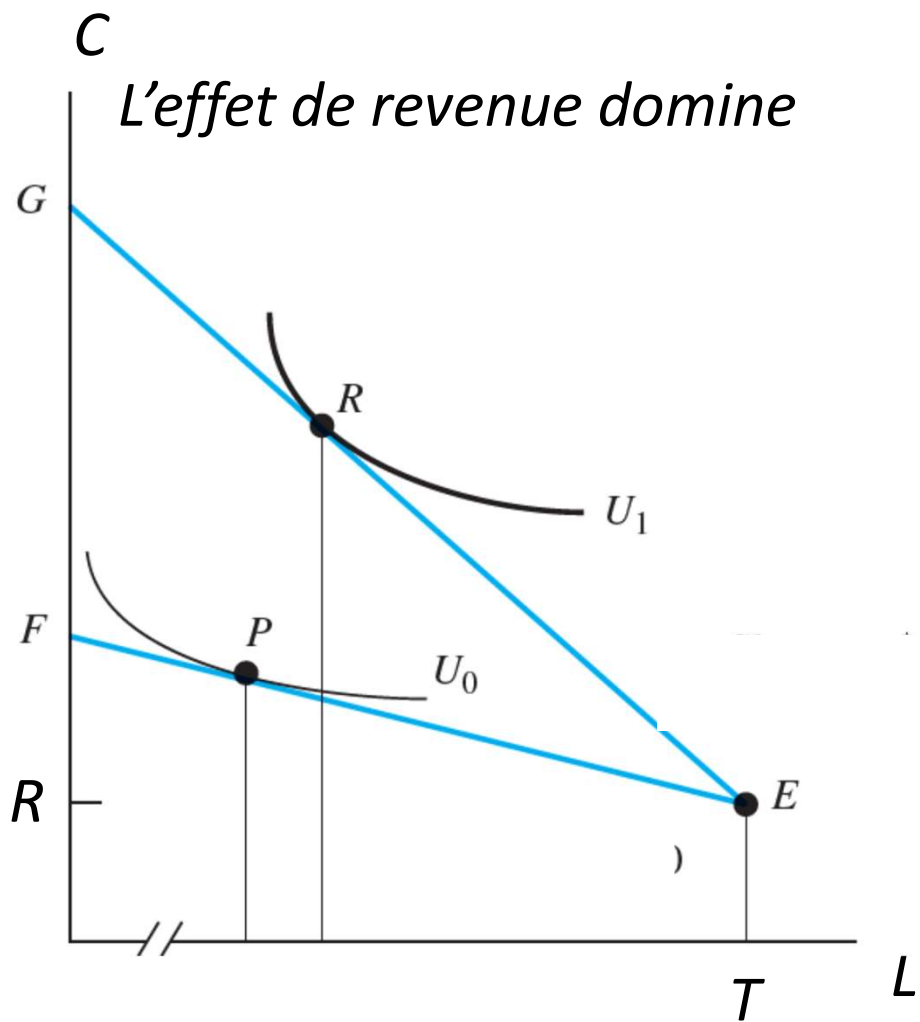


Fig 4: l'effet d'augmentation du salaire



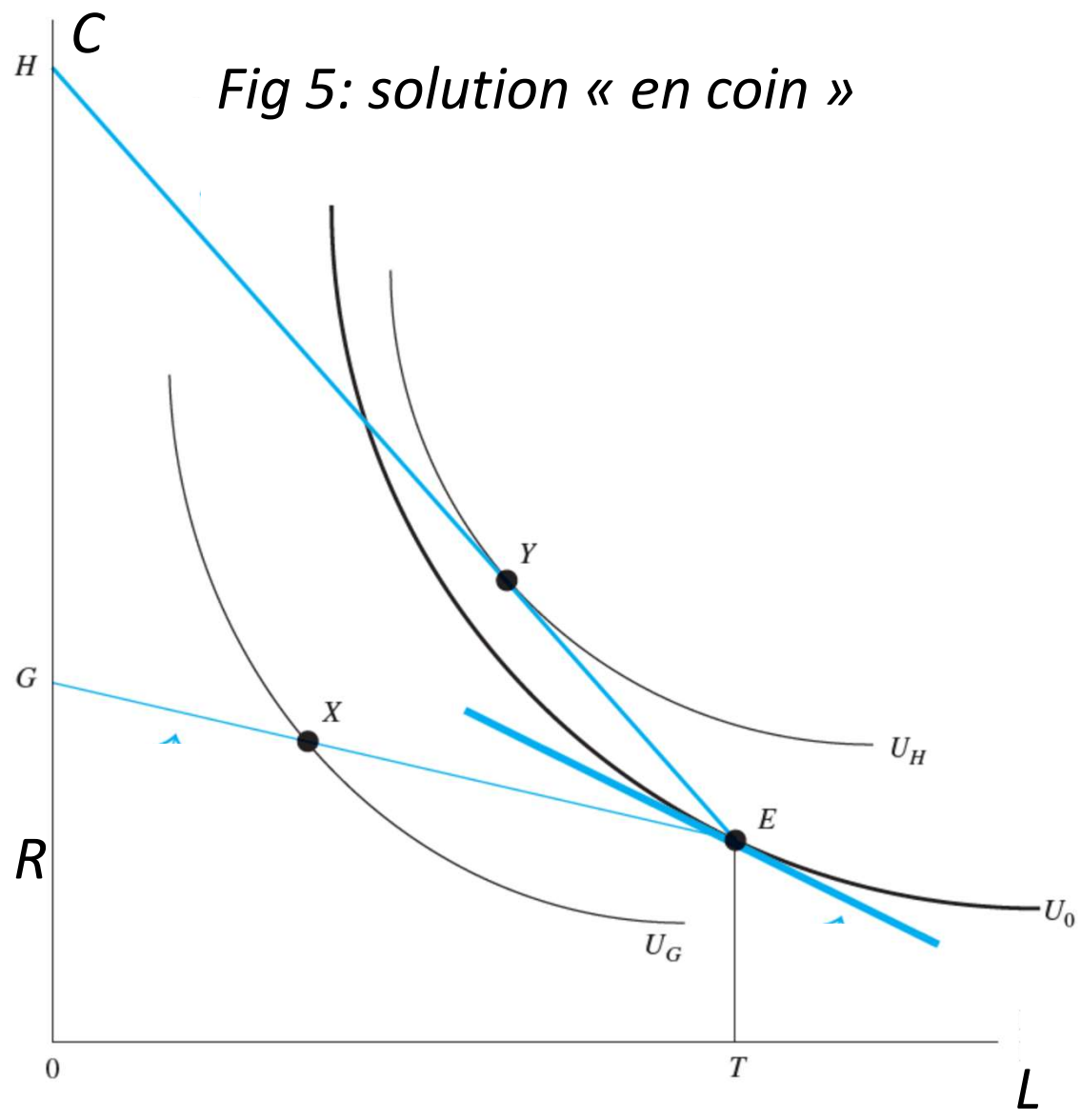


Fig 5: solution « en coin »

*Fig 6: l'offre du travail*

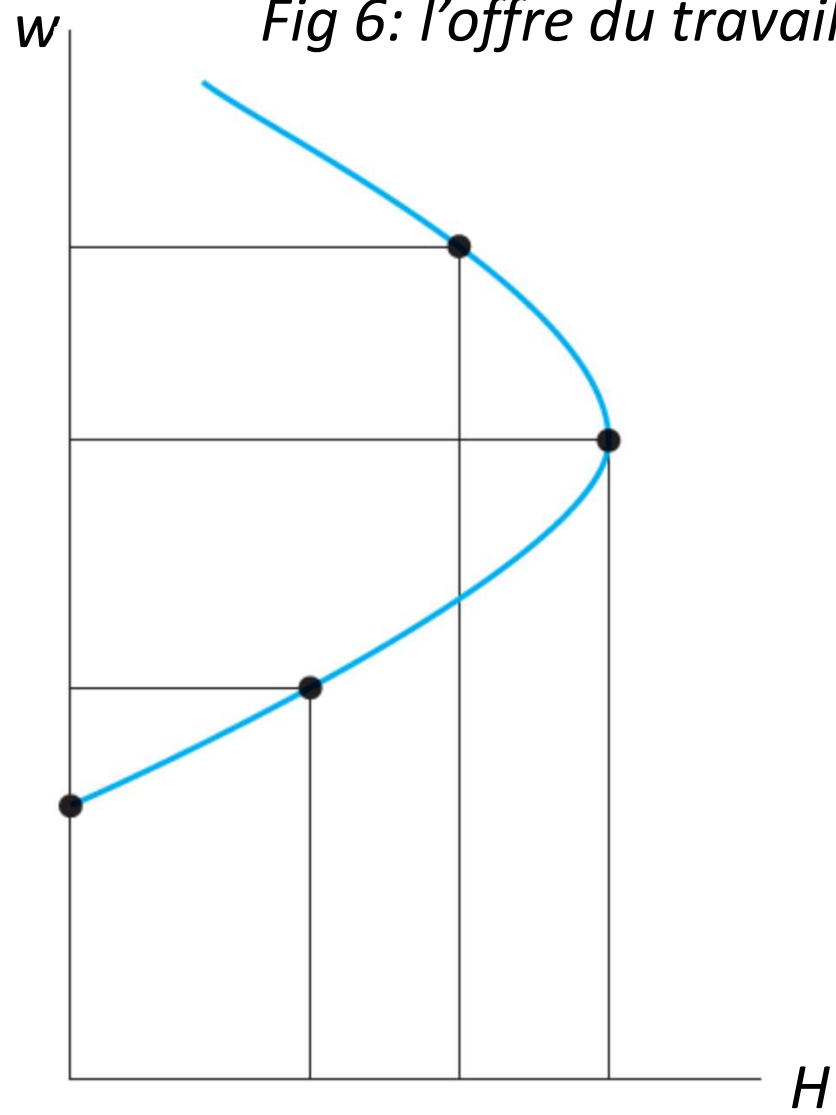


Fig 7.

Source: Jacob Mincer, "Intercountry Comparisons of Labor Force Trends and of Related Developments: An Overview," *Journal of Labor Economics* 3 (January 1985, Part 2): S2, S6.

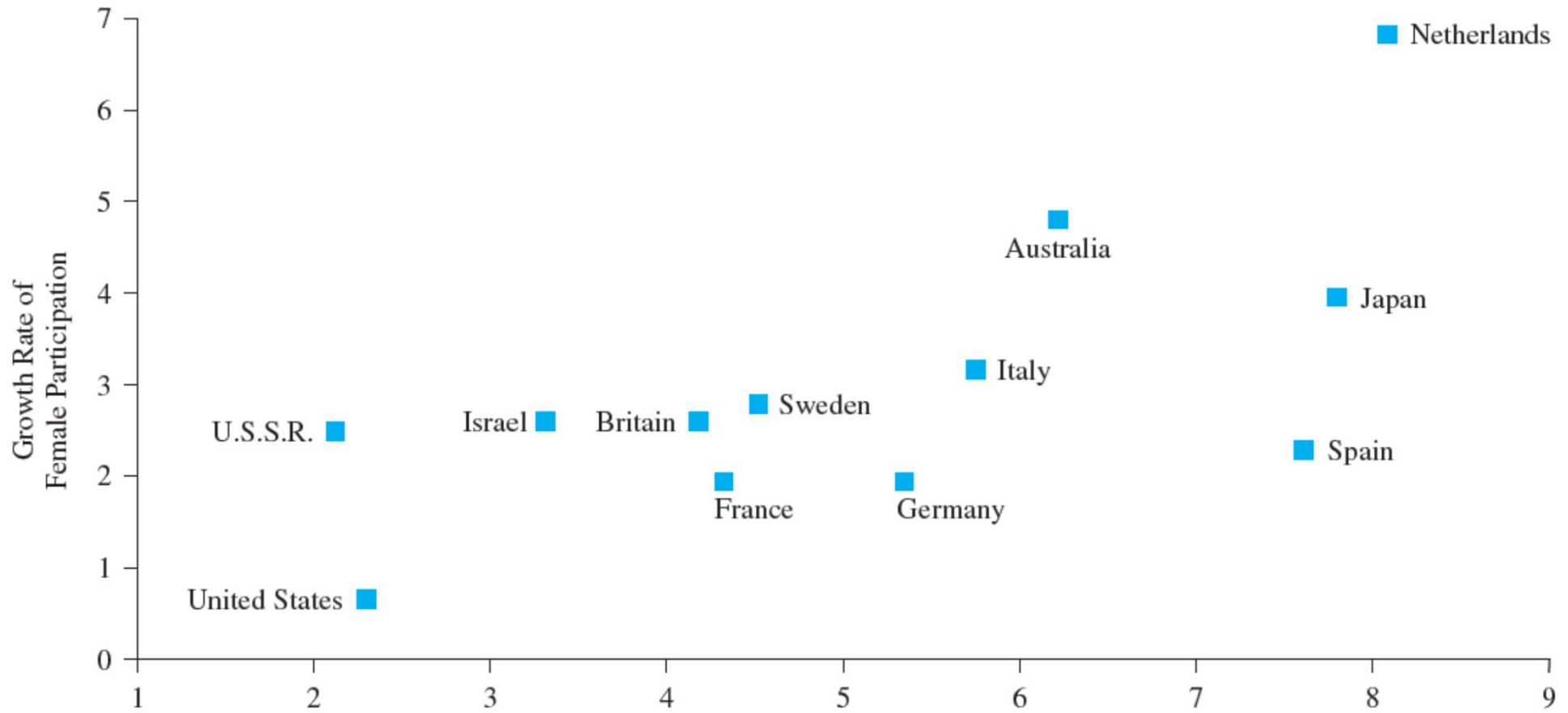


Fig 8: RMI

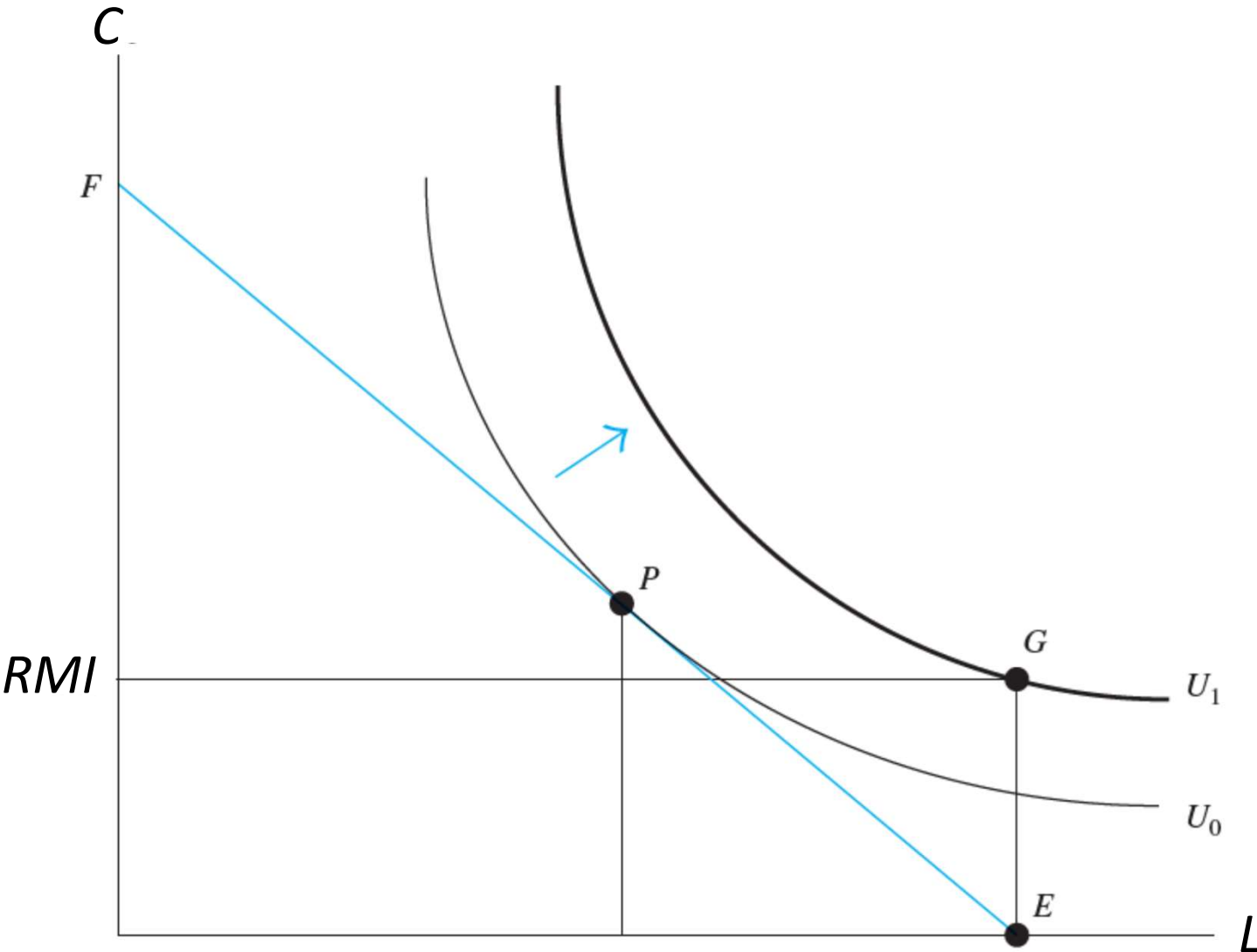




Fig 9: exercise 8

